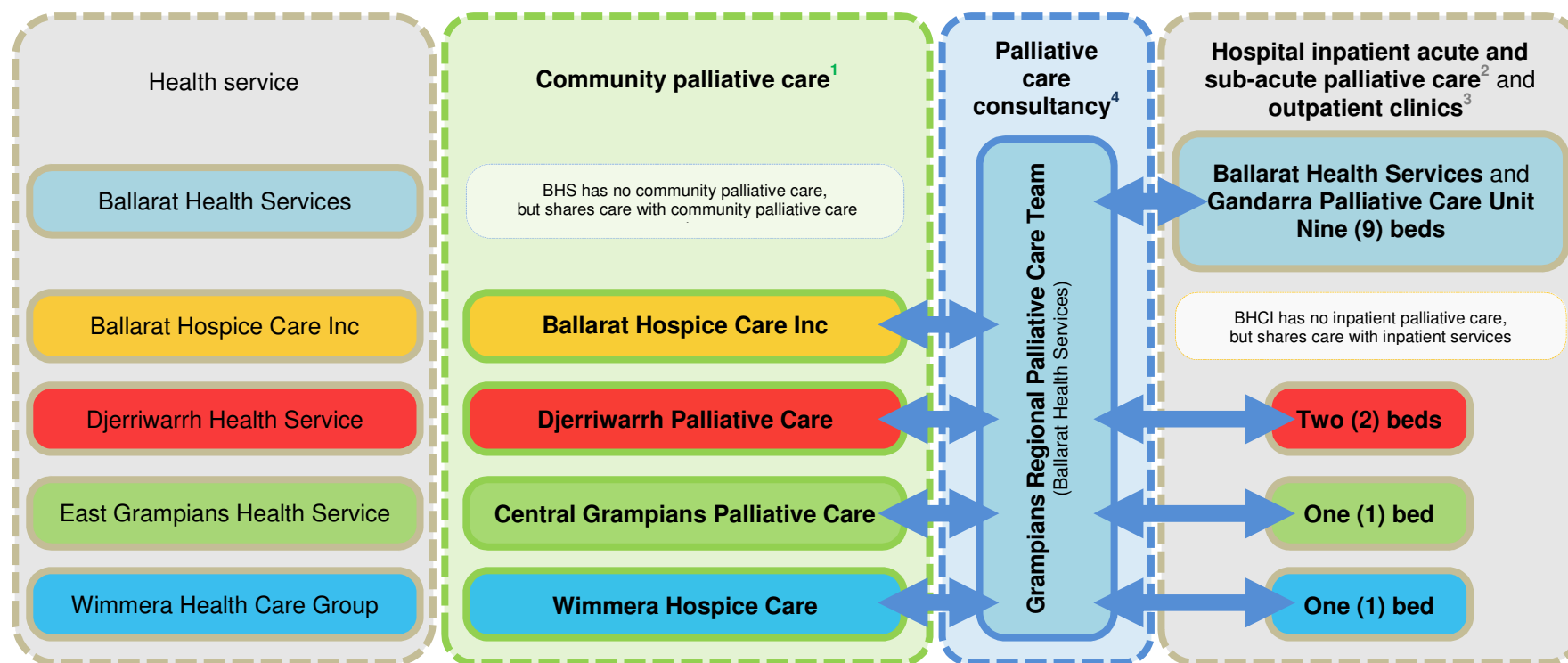




### Specialist palliative care\* in Grampians region



For people diagnosed with a life-threatening illness and families/carers who require:

1. Management of complex pain and other symptoms or end-of-life care and live at home, including residential disability and aged care facilities. Community palliative care in peoples' homes is specialist, holistic, interdisciplinary care including assessment, care planning, interventions and referral; includes nursing care, allied health and respite, as well as practical support, information, equipment, medications and access to medical assessment and review in the home.
2. Management of complex pain and other symptoms or end-of-life care and are in hospitals in acute or subacute wards or purpose built, stand-alone sub-acute units.
3. Care planning and interventions early in their care pathway, often where treatment and palliative care may be provided concurrently.

For community palliative care services and treating teams in hospitals:

4. Grampians Regional Palliative Care Team provides consultancy for admitted patients, advice, support, education and training.

\* Specialist palliative care funded by Department of Health.

In addition to specialist palliative care shown above, other health care practitioners and residential disability and aged care facilities use the palliative approach. For people diagnosed with a life-threatening illness and families/carers, the palliative approach focusses on comfort care and living well to manage uncomplicated symptoms and distress and improve the quality of life throughout a period of declining health, and especially at the end of life.